



Weekly Flu Surveillance Report

Week 15 - April 7th - April 13th, 2024

Disclaimer

Most cases of influenza are not reportable in the state of Texas, thus the data in this report was collected from hospitals, clinics, and schools throughout the region who have agreed to voluntarily submit data.

Definitions

ILI: Influenza-Like Illness. This is an illness that resembles the flu, but has not been confirmed. **Rapid:** These tests are typically done in-house to quickly test for influenza. **PCR:** These tests are generally more precise than rapid tests and are performed at the DSHS state lab and many commercial labs to confirm a case of influenza.

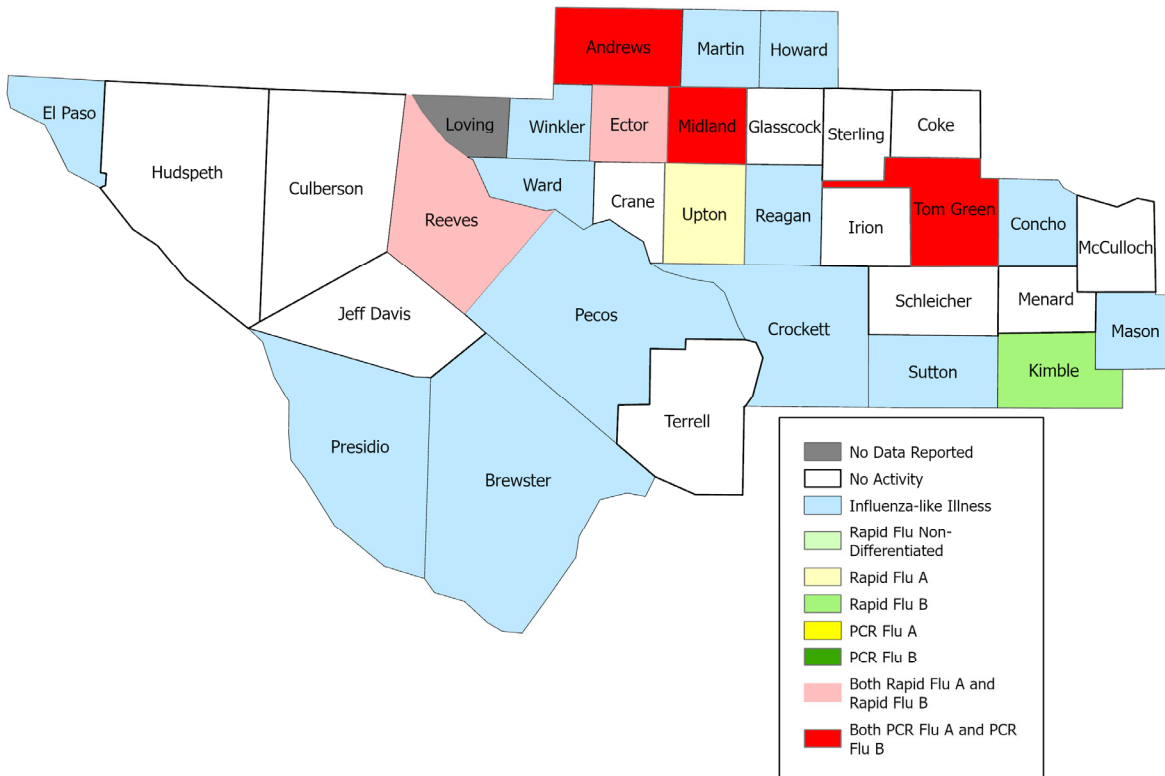
Summary Data

Condition	Week 15	Week 14	Week 13
Number of Counties Reporting (36 total)	↑ 35	33	35
Number of Counties Reporting ILI	↑ 17	14	17
Number of Counties Reporting High Levels of ILI*	↑ 5	3	3
Number of Counties Reporting Flu A	↑ 6	5	5
Number of Counties Reporting Flu B	→ 6	6	6
Number of Counties Reporting Flu A & Flu B	→ 5	5	4

The arrows represent changes from the previous week. A sideways arrow means there was no change in that condition.

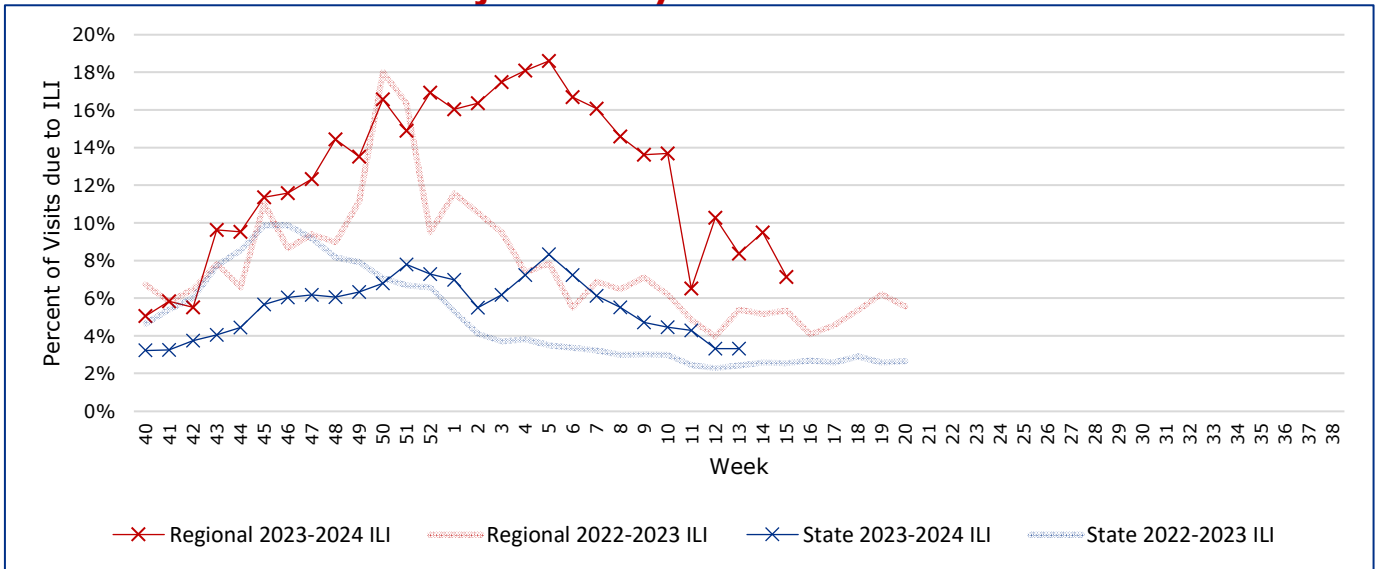
*Counties with total percent of visits due to ILI above 4.0% for the week are considered to have high/abnormal levels.

Map of Regional Flu Activity



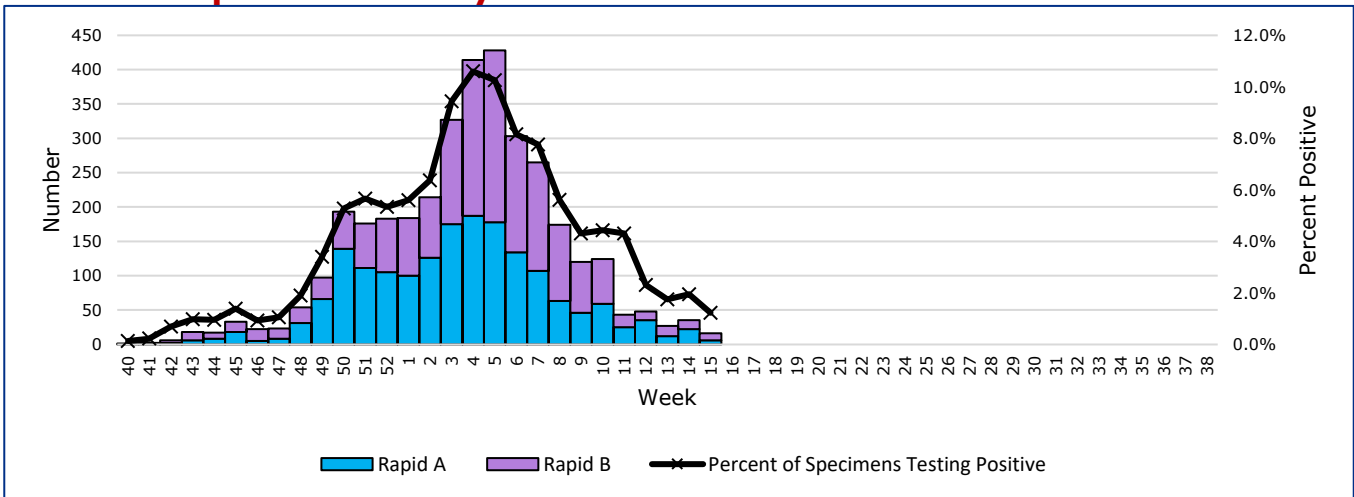
The map above depicts the previous week's reports of flu or influenza-like illness activity in each county. The legend on the bottom right of the map describes the meaning of each color.

Influenza-Like Illness Projections by Week



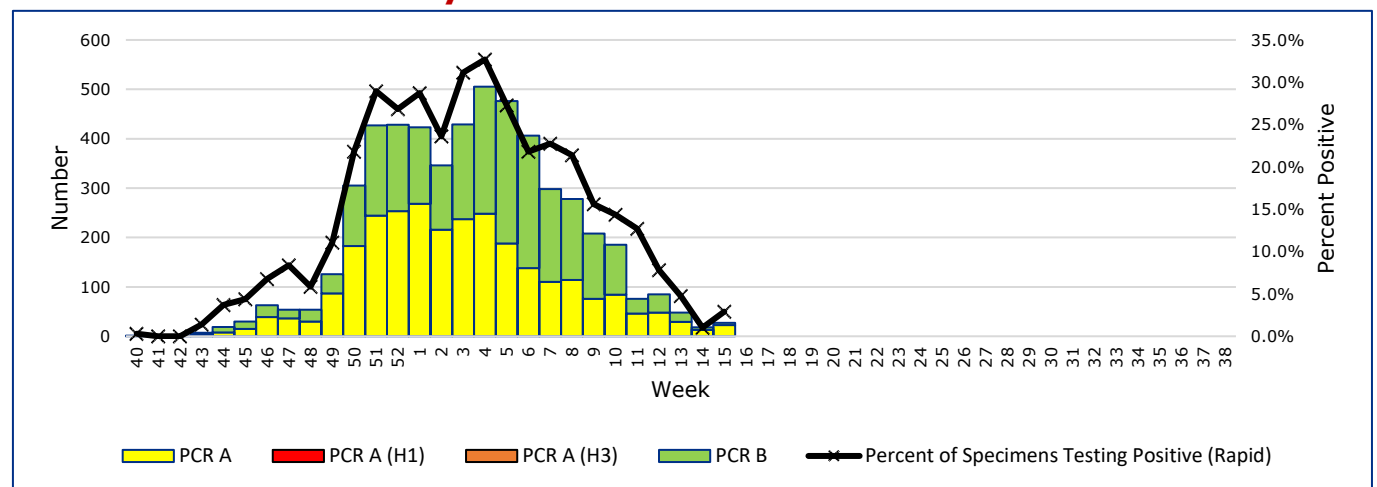
This chart documents the percentage of patient visits that were due to ILI at hospitals and clinics around the region, excluding confirmed COVID cases. It compares our region's data with the state's data and also compares to last flu season.

Positive Rapid Flu Tests by Week



This chart documents the number of rapid tests that have come back positive for flu A and flu B each week throughout the region.

Positive PCR Flu Tests by Week



This chart documents the number of PCR tests that have come back positive for flu A and flu B each week throughout the region.

Flu Data by County

County	Week 15				Week 14				Week 13			
	Patient Visits	% with ILI	Flu A	Flu B	Patient Visits	% with ILI	Flu A	Flu B	Patient Visits	% with ILI	Flu A	Flu B
Andrews	730	8%	2	1	220	0%	0	0	612	7%	0	4
Borden	1	0%	0	0	0		0	0	1	0%	0	0
Brewster	102	0%	0	0	87	0%	0	0	83	0%	0	0
Coke	4	0%	0	0	7	0%	0	0	4	0%	0	0
Concho	18	0%	0	0	27	0%	0	0	16	0%	0	0
Crane	27	0%	0	0	36	0%	0	0	24	0%	0	0
Crockett	6	0%	0	0	10	0%	0	0	12	0%	0	0
Culberson	4	0%	0	0	4	0%	0	0	8	0%	0	0
Dawson	139	0%	0	0	156	0%	0	0	144	0%	0	0
Ector	5166	19%	11	6	5582	20%	28	12	5005	21%	19	17
El Paso	7100	0%	0	0	6979	0%	0	0	6712	0%	0	0
Gaines	156	0%	0	0	132	0%	0	0	150	0%	0	0
Glasscock	5	0%	0	0	2	0%	0	0	14	7%	0	0
Howard	335	0%	0	0	338	0%	0	0	546	3%	0	0
Hudspeth	20	0%	0	0	15	0%	0	0	20	0%	0	0
Irion	1	0%	0	0	1	0%	0	0	0		0	0
Jeff Davis	6	0%	0	0	15	0%	0	0	14	0%	0	0
Kimble	129	5%	0	1	11	0%	0	0	10	0%	0	0
Loving	0		0	0	0		0	0	1	0%	0	0
McCulloch	15	0%	0	0	26	54%	0	0	42	76%	0	0
Martin	49	0%	0	0	56	0%	0	0	250	6%	0	0
Mason	29	0%	0	0	27	0%	0	0	36	0%	0	0
Menard	5	0%	0	0	12	0%	0	0	3	0%	0	0
Midland	2757	9%	5	1	2834	11%	2	1	2836	11%	10	5
Pecos	107	0%	0	0	136	0%	0	0	116	0%	0	0
Presidio	34	0%	0	0	32	0%	0	0	41	0%	0	0
Reagan	24	0%	0	0	17	0%	0	0	25	0%	0	0
Reeves	935	2%	1	2	929	4%	0	2	838	3%	2	1
Schleicher	1	0%	0	0	4	0%	0	0	2	0%	0	0
Sterling	1	0%	0	0	0		0	0	2	0%	0	0
Sutton	16	0%	0	0	28	0%	0	0	16	0%	0	0
Terrell	4	0%	0	0	6	0%	0	0	6	0%	0	0
Tom Green	1436	2%	9	3	43	0%	0	0	1298	1%	7	6
Upton	99	7%	1	0	110	15%	1	1	116	14%	0	1
Ward	133	0%	0	0	688	41%	2	1	139	0%	0	0
Winkler	107	0%	0	0	415	14%	2	1	338	13%	3	0
Total	19701	7.0%	29	14	18985	9.6%	35	18	19480	8.2%	41	34

Flu-Associated Pediatric Deaths & Outbreaks

No flu-associated pediatric deaths have been reported in PHR 9/10 this flu season. In PHR 9/10, no flu outbreaks have been reported for Week 15.

For a more comprehensive look at respiratory illnesses circulating throughout Texas, please visit: <https://www.dshs.texas.gov/texas-respiratory-virus-surveillance-report> and select the "Current Texas Respiratory Virus Surveillance Report"