



# Weekly Flu Surveillance Report

Week 14 - March 31st - April 6th, 2024

## Disclaimer

Most cases of influenza are not reportable in the state of Texas, thus the data in this report was collected from hospitals, clinics, and schools throughout the region who have agreed to voluntarily submit data.

## Definitions

**ILI:** Influenza-Like Illness. This is an illness that resembles the flu, but has not been confirmed. **Rapid:** These tests are typically done in-house to quickly test for influenza. **PCR:** These tests are generally more precise than rapid tests and are performed at the DSHS state lab and many commercial labs to confirm a case of influenza.

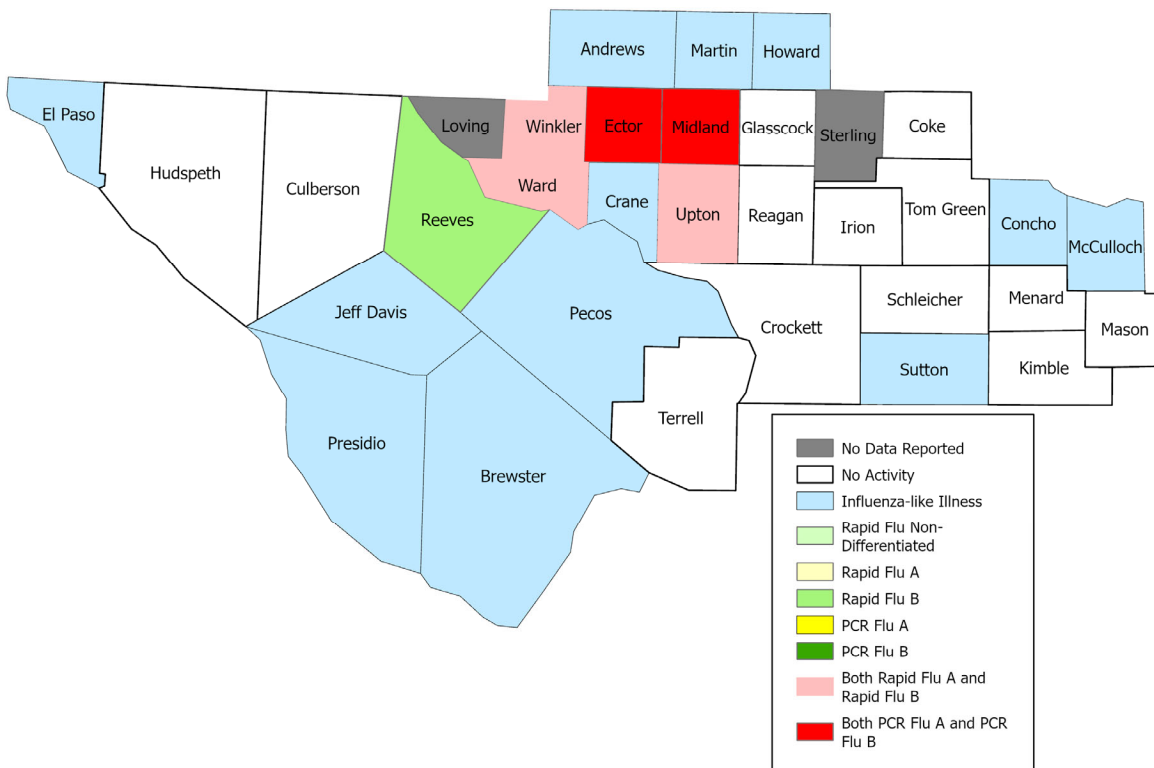
## Summary Data

Condition	Week 14	Week 13	Week 12
Number of Counties Reporting (36 total)	↓ 33	35	35
Number of Counties Reporting ILI	↓ 14	17	20
Number of Counties Reporting High Levels of ILI*	→ 3	3	5
Number of Counties Reporting Flu A	→ 5	5	11
Number of Counties Reporting Flu B	→ 6	6	8
Number of Counties Reporting Flu A & Flu B	↑ 5	4	8

The arrows represent changes from the previous week. A sideways arrow means there was no change in that condition.

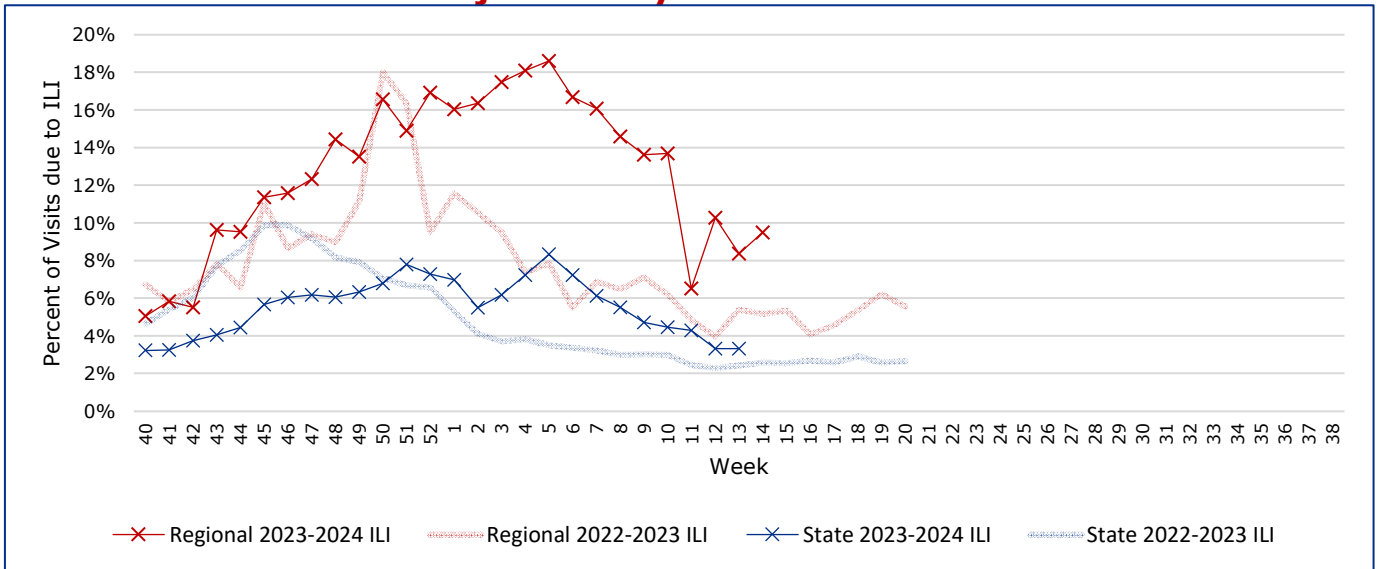
\*Counties with total percent of visits due to ILI above 4.0% for the week are considered to have high/abnormal levels.

## Map of Regional Flu Activity



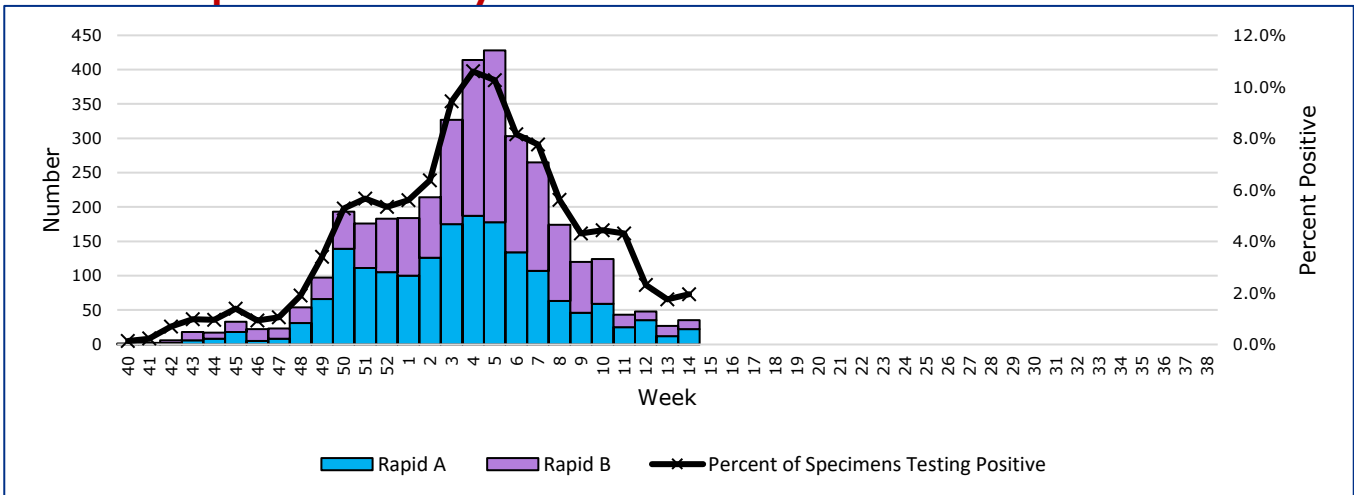
The map above depicts the previous week's reports of flu or influenza-like illness activity in each county. The legend on the bottom right of the map describes the meaning of each color.

## Influenza-Like Illness Projections by Week



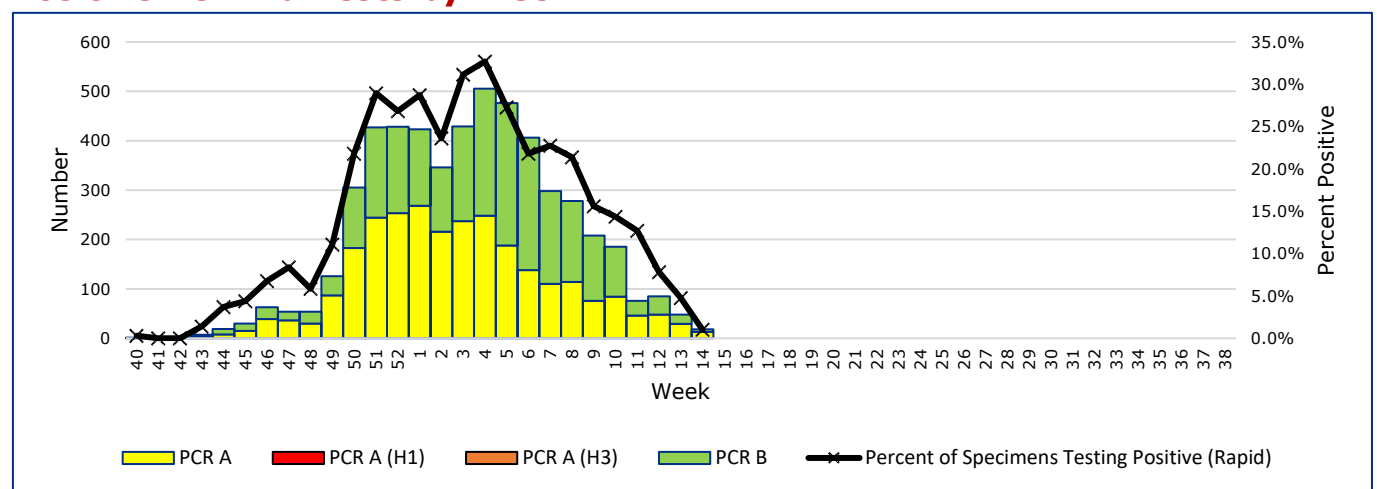
This chart documents the percentage of patient visits that were due to ILI at hospitals and clinics around the region, excluding confirmed COVID cases. It compares our region's data with the state's data and also compares to last flu season.

## Positive Rapid Flu Tests by Week



This chart documents the number of rapid tests that have come back positive for flu A and flu B each week throughout the region.

## Positive PCR Flu Tests by Week



This chart documents the number of PCR tests that have come back positive for flu A and flu B each week throughout the region.

## Flu Data by County

County	Week 14				Week 13				Week 12			
	Patient Visits	% with ILI	Flu A	Flu B	Patient Visits	% with ILI	Flu A	Flu B	Patient Visits	% with ILI	Flu A	Flu B
Andrews	220	0%	0	0	612	7%	0	4	639	7%	2	4
Borden	0		0	0	1	0%	0	0	1	0%	0	0
Brewster	87	0%	0	0	83	0%	0	0	100	0%	0	0
Coke	7	0%	0	0	4	0%	0	0	8	0%	0	0
Concho	27	0%	0	0	16	0%	0	0	16	0%	0	0
Crane	36	0%	0	0	24	0%	0	0	35	0%	0	0
Crockett	10	0%	0	0	12	0%	0	0	6	0%	0	0
Culberson	4	0%	0	0	8	0%	0	0	4	0%	0	0
Dawson	156	0%	0	0	144	0%	0	0	150	0%	0	0
Ector	5582	20%	28	12	5005	21%	19	17	5366	21%	35	19
El Paso	6979	0%	0	0	6712	0%	0	0	7382	1%	3	4
Gaines	132	0%	0	0	150	0%	0	0	159	0%	0	0
Glasscock	2	0%	0	0	14	7%	0	0	4	0%	0	0
Howard	338	0%	0	0	546	3%	0	0	534	4%	0	0
Hudspeth	15	0%	0	0	20	0%	0	0	14	0%	0	0
Irion	1	0%	0	0	0		0	0	2	0%	0	0
Jeff Davis	15	0%	0	0	14	0%	0	0	13	0%	0	0
Kimble	11	0%	0	0	10	0%	0	0	119	4%	1	0
Loving	0		0	0	1	0%	0	0	0		0	0
McCulloch	26	54%	0	0	42	76%	0	0	68	74%	1	3
Martin	56	0%	0	0	250	6%	0	0	149	7%	1	0
Mason	27	0%	0	0	36	0%	0	0	33	0%	0	0
Menard	12	0%	0	0	3	0%	0	0	15	0%	0	0
Midland	2834	11%	2	1	2836	11%	10	5	2874	12%	12	14
Pecos	136	0%	0	0	116	0%	0	0	120	0%	0	0
Presidio	32	0%	0	0	41	0%	0	0	26	0%	0	0
Reagan	17	0%	0	0	25	0%	0	0	21	0%	0	0
Reeves	929	4%	0	2	838	3%	2	1	990	7%	1	1
Schleicher	4	0%	0	0	2	0%	0	0	2	0%	0	0
Sterling	0		0	0	2	0%	0	0	2	0%	0	0
Sutton	28	0%	0	0	16	0%	0	0	13	0%	0	0
Terrell	6	0%	0	0	6	0%	0	0	6	0%	0	0
Tom Green	43	0%	0	0	1298	1%	7	6	1413	1%	12	3
Upton	110	15%	1	1	116	14%	0	1	124	12%	1	0
Ward	688	41%	2	1	139	0%	0	0	749	44%	14	2
Winkler	415	14%	2	1	338	13%	3	0	81	0%	0	0
<b>Total</b>	<b>18985</b>	<b>9.6%</b>	<b>35</b>	<b>18</b>	<b>19480</b>	<b>8.2%</b>	<b>41</b>	<b>34</b>	<b>21238</b>	<b>10.1%</b>	<b>83</b>	<b>50</b>

## **Flu-Associated Pediatric Deaths & Outbreaks**

No flu-associated pediatric deaths have been reported in PHR 9/10 this flu season. In PHR 9/10, no flu outbreaks have been reported for Week 14.

**For a more comprehensive look at respiratory illnesses circulating throughout Texas, please visit: <https://www.dshs.texas.gov/texas-respiratory-virus-surveillance-report> and select the "Current Texas Respiratory Virus Surveillance Report"**