



**2024 DSHS Arbovirus Activity Report  
Week #40 (ending October 5, 2024)  
Report Date: October 8, 2024**

**Table 1. 2024 Arbovirus Activity Summary, Texas, Week 40**

Arbovirus	Mosquito Pools	Avian	Veterinary	Sentinel Chicken	Human					
					Febrile Illness	Neurologic Illness	Severe Dengue	TOTAL (HUMAN)	Deaths	PVD <sup>2</sup>
California Serogroup <sup>1</sup>								0		
Chikungunya					10			10		
Dengue					59		6	65	1	
Eastern Equine Encephalitis			2					0		
St. Louis Encephalitis	8							0		
West Nile	3137	29	13	3	28	54		82	9	86
Zika								1		
<b>TOTAL REPORTS</b>	<b>3145</b>	<b>29</b>	<b>15</b>	<b>3</b>	<b>97</b>	<b>54</b>	<b>6</b>	<b>158</b>	<b>10</b>	<b>86</b>

<sup>1</sup>California Serogroup includes California encephalitis, Jamestown Canyon, Keystone, La Crosse, snowshoe hare, and trivittatus viruses.

<sup>2</sup>PVD - Presumptive viremic blood donors are people who had no symptoms at the time of donating blood through a blood collection agency, but whose blood tested positive when screened for the presence of West Nile virus or Zika virus. Unless they meet the case reporting criteria, they are not counted as a case for official reporting purposes and are not included in the "Total (HUMAN)" column.

Note: Human mortality from arboviral conditions is aggregated and reported monthly once documentation has been received and verified.

For more detailed information about West Nile virus, including past weekly and annual reports, please visit <https://www.dshs.texas.gov/mosquito-borne-diseases/dshs-arbovirus-weekly-activity-reports>

For more detailed information about Zika, please visit <http://www.texaszika.org/>

Please note that arbovirus weekly reports are weekly snapshots of preliminary DSHS data and may change at any time due to quality assurance procedures. The final weekly report of each year is not complete data for the year and should not be used to draw conclusions regarding annual activity. Refer to our annual summary reports for finalized, complete data or contact [wv@dshtexas.gov](mailto:wv@dshtexas.gov) to request additional data or with any questions.

**Table 2. 2024 Aedes-Associated Arbovirus Activity by County†, Week 40**

County	CHIKV*		DENV*		ZIKV		
	M	H	M	H	M	H	PVD
Bexar		1		3			
Brazoria				1			
Collin		3		8			
Dallas		1		6			
Denton				5			
El Paso				3			
Fort Bend		3		5			
Grayson				1			
Hays				2			
Hidalgo				1			
Kaufman				1			
Maverick				1			
McMullen				1			
Mills				1			
Montgomery				5			
Parker				1			
Rains				1			
Tarrant		1		4			
Taylor				1			
Tom Green				2			
Travis				8			
Val Verde				1			
Victoria				1			
Williamson		1		2			
Total Number of Reports	0	10	0	65	0	1	0

M- mosquito H- human PVD- Presumptive viremic blood donors

CHIKV - Chikungunya Virus

DENV - Dengue Virus

ZIKV - Zika Virus

\*All reported cases are imported.

†County level data is not reported for conditions with <5 cases reported in a year.

**Table 3. 2024 Other Arbovirus Activity by County†, Week 40**

County	CAL		EEEV				SLEV			WNV								
	M	H	M	V	SC	H	M	SC	H	M	A	V	SC	H				
														WNF	WNND	PVD‡	TOTAL	
Armstrong										0		1						0
Bell										41						1		1
Bexar										37				1	1	4		2
Bowie										0					1		1	
Brazoria										7							0	
Brazos										20							0	
Briscoe										0		1					0	
Brooks										0		1					0	
Burleson										1							0	
Clay										0					1		1	
Collin										91					2	5	2	
Comal										0						1	0	
Cooke										8		1		1			1	
Crosby										1							0	
Dallam										0						1	0	
Dallas										674		1		5	1	6	6	
Denton										77				1	4	4	5	
Eastland										0		1					0	
Ector										0						1	0	
El Paso							2			4							0	
Ellis										47						2	0	
Erath										0		1					0	
Floyd										1							0	
Fort Bend										31					1		1	
Galveston										3			3			1	0	
Grimes										3							0	
Harris										683	27			2	9	23	11	
Haskell										0		1					0	
Hays										8				1			1	
Henderson										0					1		1	
Hidalgo										0				1	1		2	
Hood										0						1	0	
Houston				2						0							0	
Hunt										16							0	
Jefferson										22						1	0	
Jim Wells										15						1	0	
Johnson										76		1				2	0	
Kaufman										4						1	0	

King									0	1							0
Kleberg									6								0
Leon									1								0
Lubbock							6		51		1			1	2	1	
Lynn									0						1	0	
McLennan									0		1		1	1	2	2	
Midland									23				1		1	1	
Moore									0						1	0	
Montague									0				1				1
Montgomery									256				2	5	15	7	
Nueces									16								0
Orange									18						1	0	
Parker									0					1			1
Potter									3								0
Randall									3		1				1	0	
Rockwall									3								0
San Patricio									5								0
Smith									0	1							0
Tarrant									675		1		5	18	3	23	
Taylor									1								0
Terry									0					1			1
Travis									95				3		4	3	
Webb									7								0
Walker									0				1	1			2
Wichita									43					3	1	3	
Williamson									61					2			2
Total Number of Reports	0	0	0	2	0	0	8	0	0	3137	29	13	3	28	54	86	82

M - mosquito A-avian V-veterinary SC- sentinel chicken H- human WNF - West Nile Fever WNND - West Nile Neuroinvasive Disease

CAL - California Serogroup Viruses

EEEV - Eastern Equine Encephalitis Virus

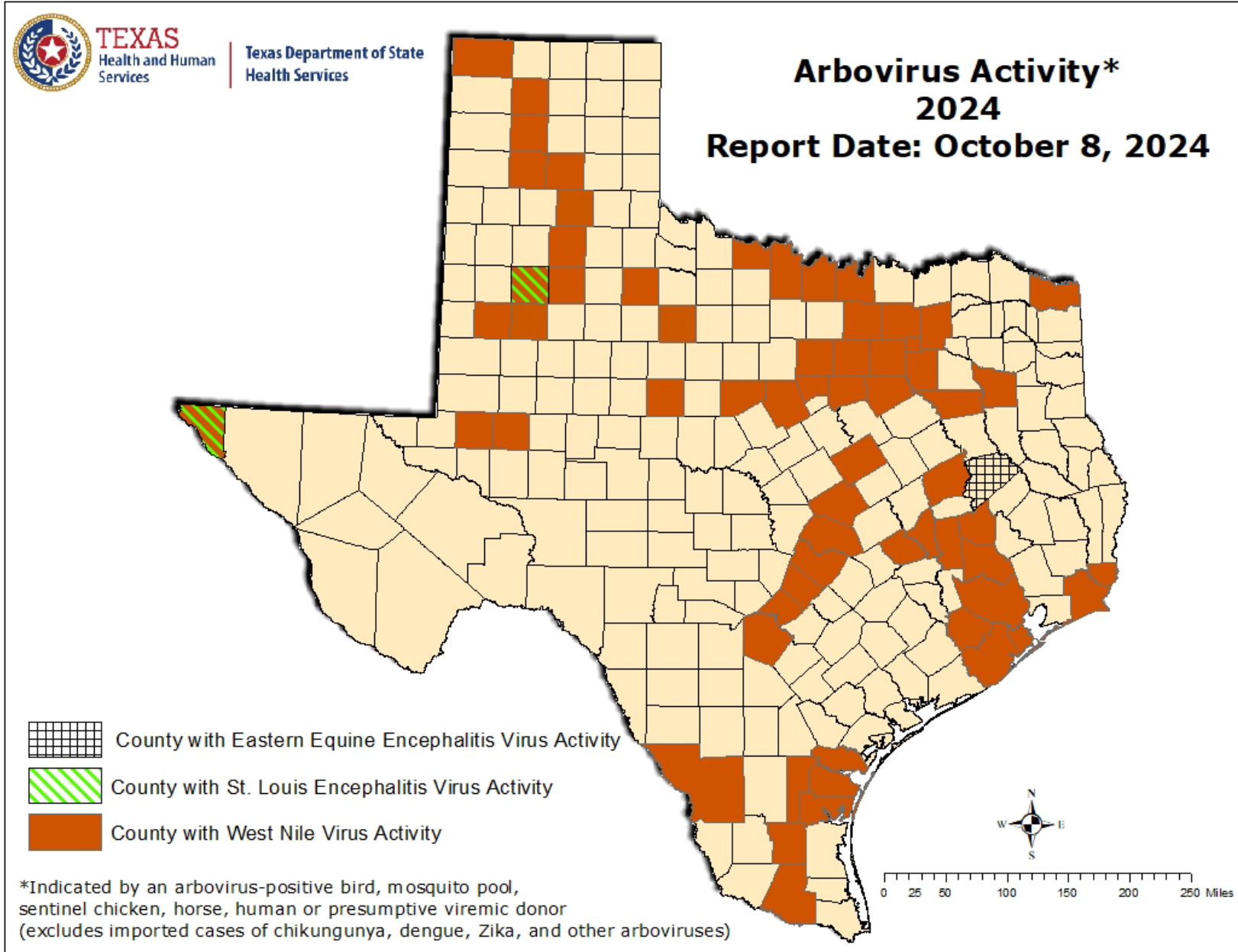
SLEV - St. Louis Encephalitis Virus

WNV - West Nile Virus

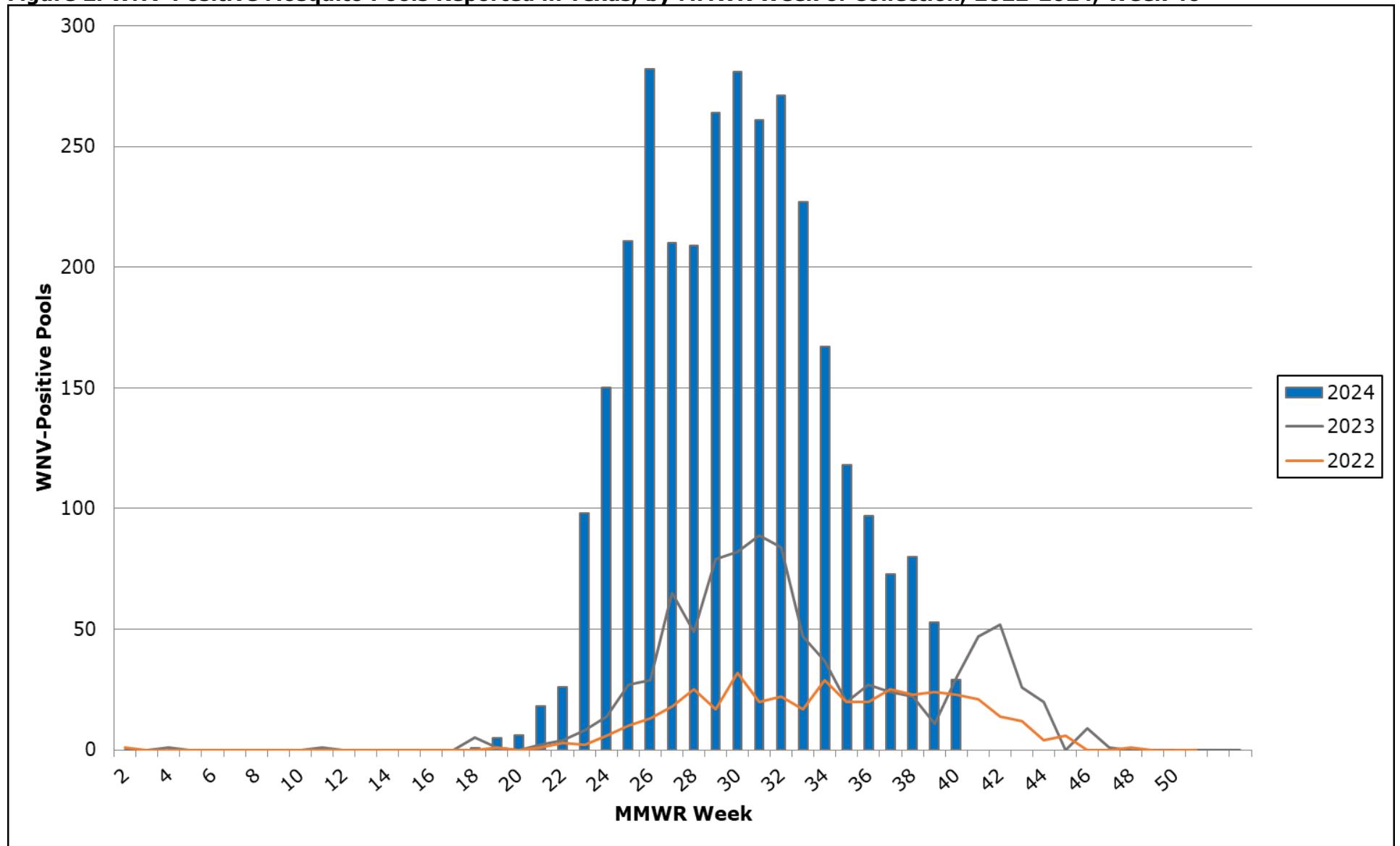
†County level data is not reported for conditions with <5 cases reported in a year.

‡PVDs are not included in the "Total" column.

Figure 1. Texas Counties Reporting Arbovirus Activity, Week 40



**Figure 2. WNV-Positive Mosquito Pools Reported in Texas, by MMWR Week of Collection, 2022-2024, Week 40**



**Figure 3. Human Cases of West Nile Virus Reported in Texas, by MMWR Week of Onset, 2022-2024, Week 40**

