



**2024 DSHS Arbovirus Activity Report
Week #34 (ending August 24, 2024)
Report Date: August 27, 2024**

Table 1. 2024 Arbovirus Activity Summary, Texas, Week 34

Arbovirus	Mosquito Pools	Avian	Veterinary	Sentinel Chicken	Human					
					Febrile Illness	Neurologic Illness	Severe Dengue	TOTAL (HUMAN)	Deaths	PVD ²
California Serogroup ¹								0		
Chikungunya					6			6		
Dengue					32		2	34		
Eastern Equine Encephalitis			2					0		
St. Louis Encephalitis	2							0		
West Nile	2604	28	2		18	21		39	2	66
Zika								0		
TOTAL REPORTS	2606	28	4	0	56	21	2	79	2	66

¹California Serogroup includes California encephalitis, Jamestown Canyon, Keystone, La Crosse, snowshoe hare, and trivittatus viruses.

²PVD - Presumptive viremic blood donors are people who had no symptoms at the time of donating blood through a blood collection agency, but whose blood tested positive when screened for the presence of West Nile virus or Zika virus. Unless they meet the case reporting criteria, they are not counted as a case for official reporting purposes and are not included in the "Total (HUMAN)" column.

Note: Human mortality from arboviral conditions is aggregated and reported monthly once documentation has been received and verified.

For more detailed information about West Nile virus, including past weekly and annual reports, please visit <https://www.dshs.texas.gov/mosquito-borne-diseases/dshs-arbovirus-weekly-activity-reports>

For more detailed information about Zika, please visit <http://www.texaszika.org/>

Please note that arbovirus weekly reports are weekly snapshots of preliminary DSHS data and may change at any time due to quality assurance procedures. The final weekly report of each year is not complete data for the year and should not be used to draw conclusions regarding annual activity. Refer to our annual summary reports for finalized, complete data or contact wv@dshtexas.gov to request additional data or with any questions.

Table 2. 2023 Aedes-Associated Arbovirus Activity by County†, Week 34

County	CHIKV*		DENV*		ZIKV		
	M	H	M	H	M	H	PVD
Bexar		1		3			
Brazoria				1			
Collin				5			
Dallas		1		5			
Denton				1			
El Paso				2			
Fort Bend		3		2			
Kaufman				1			
McMullen				1			
Montgomery				4			
Parker				1			
Tarrant				1			
Taylor				1			
Travis				4			
Victoria				1			
Williamson		1		1			
Total Number of Reports	0	6	0	34	0	0	0

M- mosquito H- human PVD- Presumptive viremic blood donors

CHIKV - Chikungunya Virus

DENV - Dengue Virus

ZIKV - Zika Virus

*All reported cases are imported.

†County level data is not reported for conditions with <5 cases reported in a year.

Table 3. 2024 Other Arbovirus Activity by County†, Week 34

County	CAL		EEEV				SLEV			WNV								
	M	H	M	V	SC	H	M	SC	H	M	A	V	SC	H				
														WNF	WNND	PVD#	TOTAL	
Bell										28								0
Bexar										26					1	1	1	2
Bowie										0						1		1
Brazoria										5								0
Brazos										15								0
Burleson										1								0
Collin										61						1	4	1
Cooke										6					1			1
Crosby										1								0
Dallas										543					5		6	5
Dallam										0							1	0
Denton										70					1	2	2	3
El Paso								2		2								0
Ellis										30							2	0
Floyd										1								0
Fort Bend										21								0
Galveston										1							1	0
Grimes										1								0
Harris										668	27				1	3	23	4
Hays										6								0
Hood										0							1	0
Houston				2						0								0
Hunt										12								0
Jefferson										18							1	0
Jim Wells										4								0
Johnson										57							1	0
Kaufman										3							1	0
King										0	1							0
Kleberg										1								0

Leon										1							0
Lubbock										43						2	0
McLennan										0		1		1			1
Midland										16						1	0
Montague										0				1			1
Montgomery										228				2	2	14	4
Nueces										6							0
Orange										14						1	0
Parker										0					1		1
Potter										1							0
Rockwall										3							0
San Patricio										1							0
Tarrant										562		1		2	8	2	10
Terry										0					1		1
Travis										64				2		1	2
Webb										7							0
Wichita										38					1	1	1
Williamson										39				1			1
Total Number of Reports	0	0	0	2	0	0	2	0	0	2604	28	2	0	18	21	66	39

M - mosquito A-avian V-veterinary SC- sentinel chicken H- human WNF - West Nile Fever WNND - West Nile Neuroinvasive Disease

CAL - California Serogroup Viruses

EEEV - Eastern Equine Encephalitis Virus

SLEV - St. Louis Encephalitis Virus

WNV - West Nile Virus

†County level data is not reported for conditions with <5 cases reported in a year.

‡PVDs are not included in the "Total" column.

Figure 1. Texas Counties Reporting Arbovirus Activity, Week 34

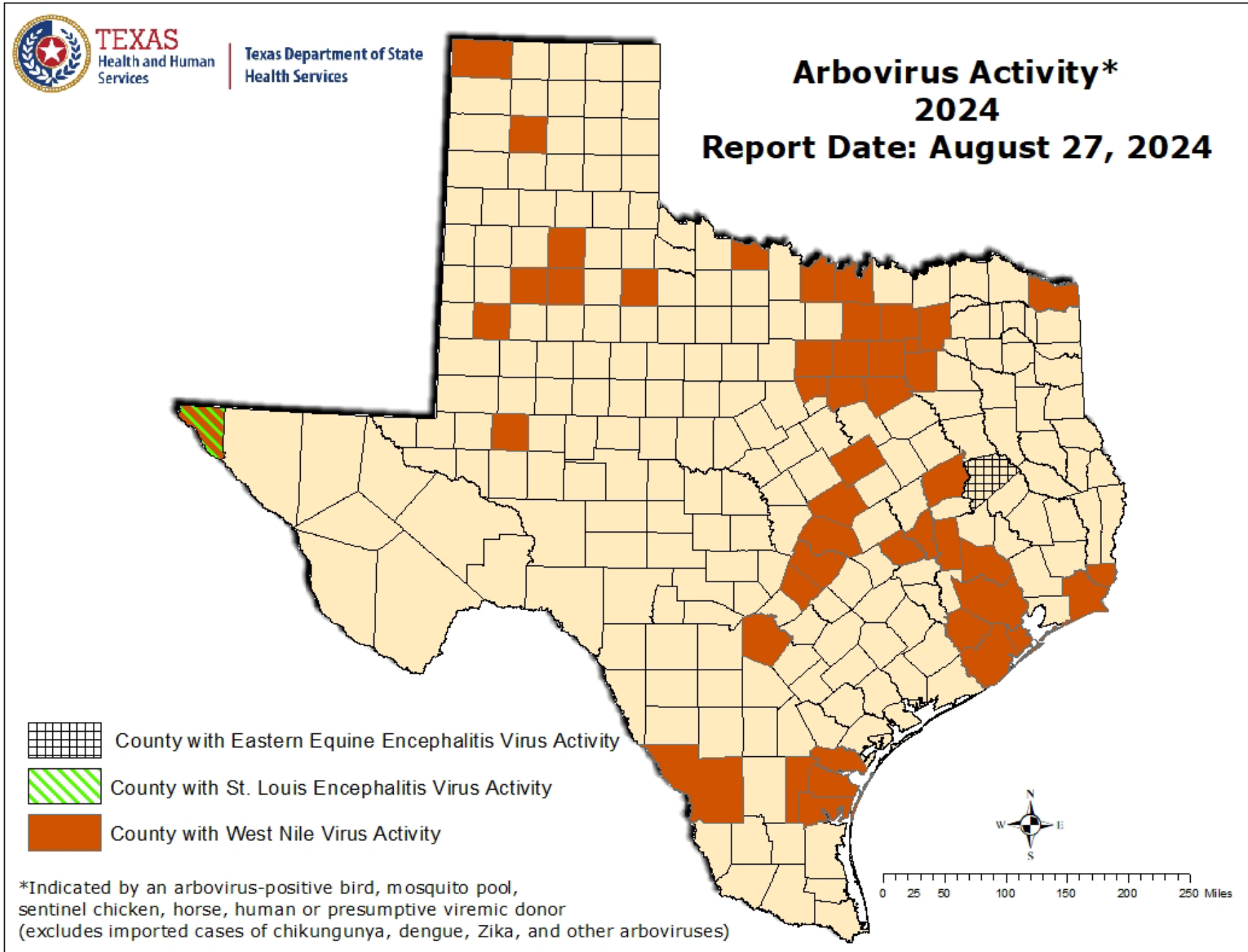


Figure 2. WNV-Positive Mosquito Pools Reported in Texas, by MMWR Week of Collection, 2022-2024, Week 34

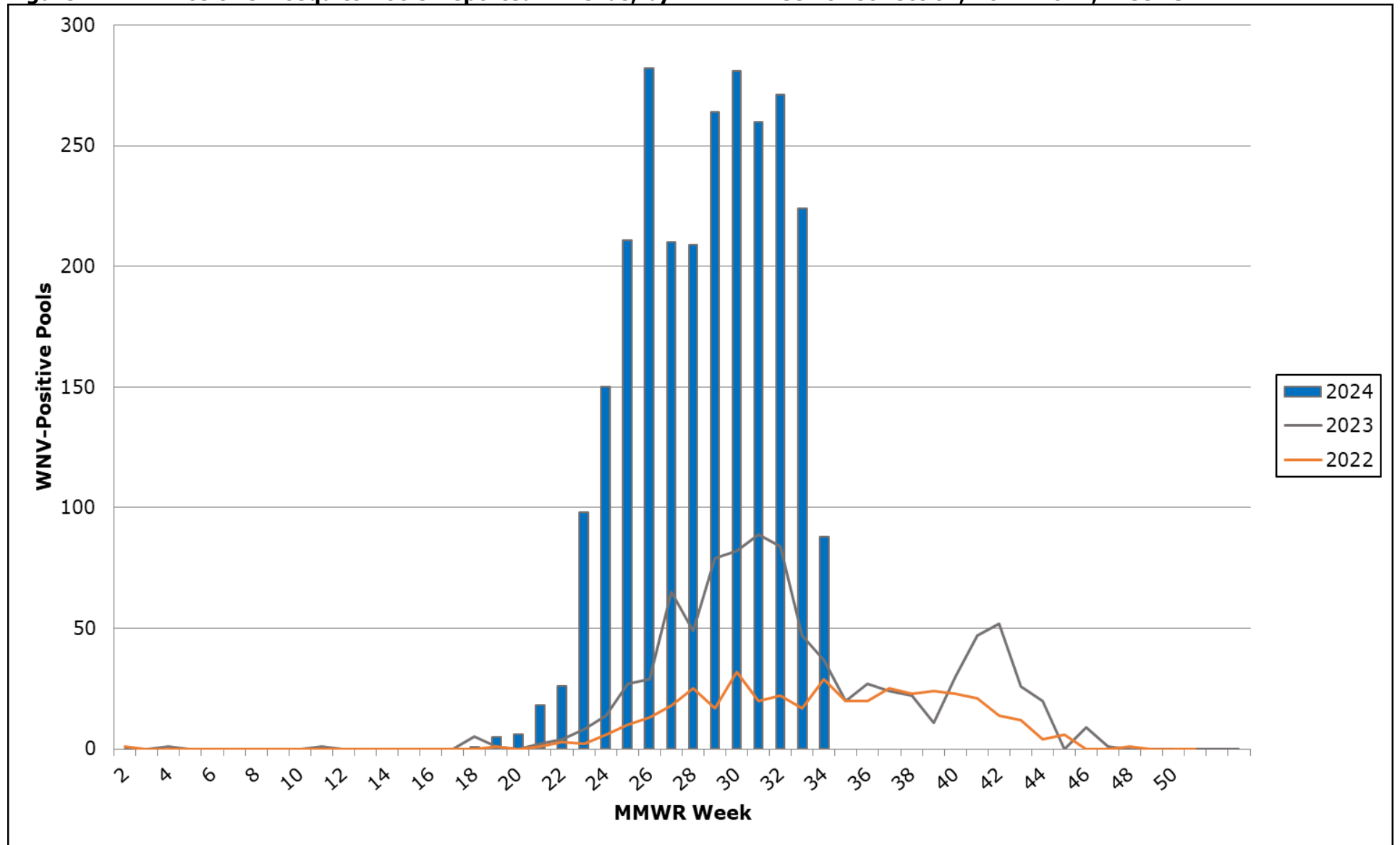


Figure 3. Human Cases of West Nile Virus Reported in Texas, by MMWR Week of Onset, 2022-2024, Week 34

