

Texas Influenza Surveillance Report 2015–2016 Season/2015 MMWR Week 40

(Oct. 04, 2015 – Oct. 10, 2015)
Report produced on 10/16/2015

Summary

Influenza activity was low in Texas. Compared to the previous week, the percentage of specimens positive for influenza increased while the percentage of patient visits due to influenza-like illness (ILI) decreased. No outbreaks were reported. In addition to influenza, other respiratory viruses—especially rhinovirus/enterovirus—were detected in Texas during week 40.

Table 1: Summary of Texas Influenza (Flu) and Influenza-like Illness (ILI) Activity for the Current Week

Texas Surveillance Component	Change from Previous Week	Current Week	Previous Week [†]	Page of Report
Statewide influenza activity level reported to CDC (geographic spread of influenza)	--	Sporadic	--	--
Statewide ILINet Activity Indicator assigned by CDC (intensity of influenza-like illness)	--	Minimal	--	--
Percentage of specimens positive for influenza	▲0.94%	2.36%	1.42% [†]	1
Percentage of visits due to ILI (ILINet)	▼1.06%	4.61%	5.67% [†]	3
Number of regions reporting increased flu/ILI activity	▲2	4	2	5
Number of regions reporting decreased flu/ILI activity	No change	0	0	5
Number of variant/novel influenza infections	No change	0	0	5
Number of ILI/influenza outbreaks	No change	0	0	5
Number of pediatric influenza deaths	No New Cases Reported	0	0	5

[†]Data displayed have been updated since last week's flu report with any new reports received.

Laboratory Results

Influenza

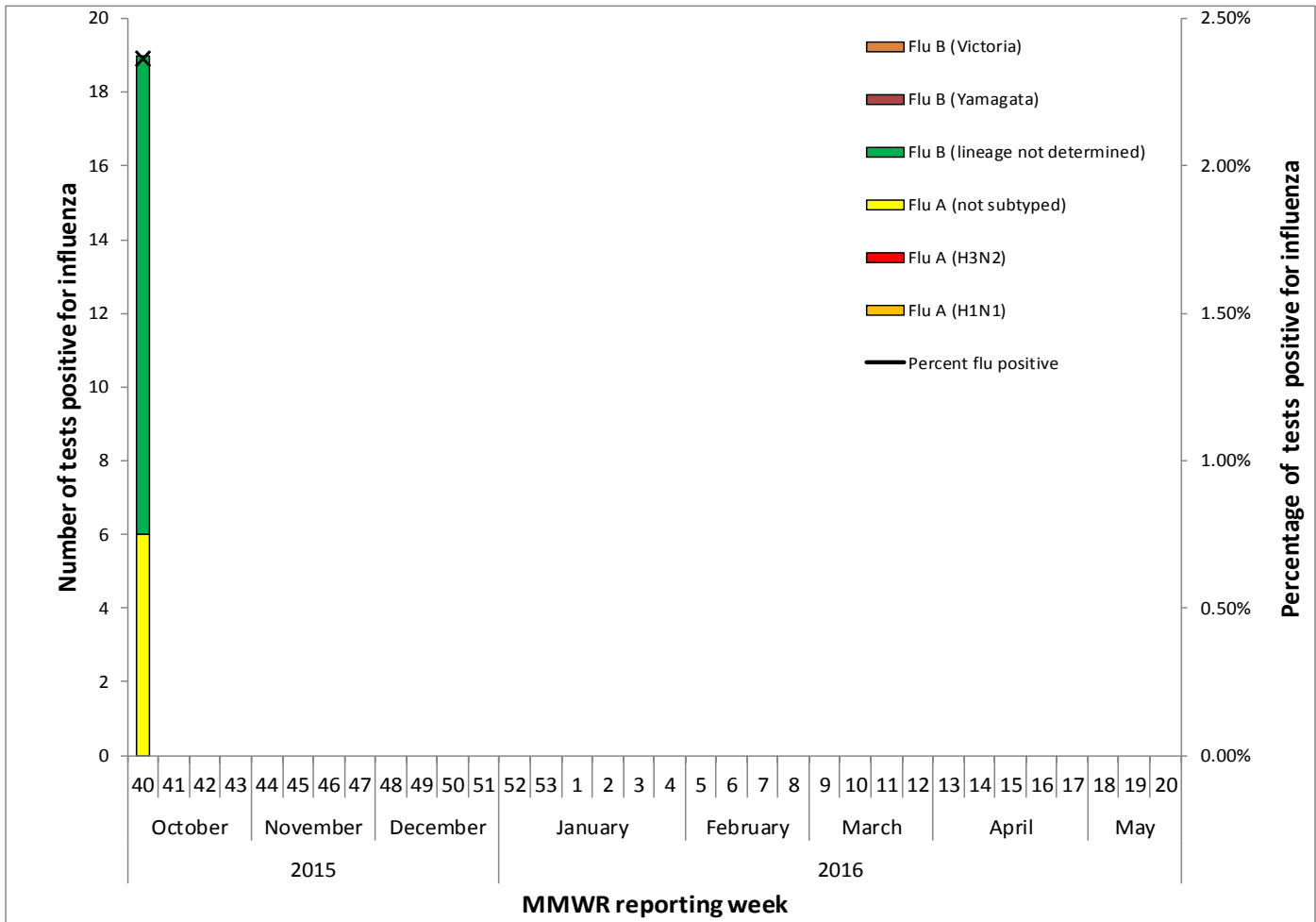
Hospital laboratories across Texas voluntarily report influenza tests (antigen, culture, and PCR) to the National Respiratory and Enteric Virus Surveillance System (NREVSS). Providers throughout Texas also submit specimens for influenza testing (PCR) to Texas public health laboratories, including the Texas Department of State Health Services (DSHS) laboratory in Austin and the nine Texas Laboratory Response Network (LRN) laboratories. The results reported by these labs are summarized below. Additional influenza test results (rapid tests, culture, PCR) were reported from providers and public health departments throughout the state (see county map at the end of this report).

Table 2: Influenza Testing Performed by Texas Laboratories for the Current Week

	Week 40	Year to Date
Number of labs reporting flu tests	12	
Number of specimens tested	804	804
Number of positive specimens (%) [†]	19 (2.36%)	19
Percentage of total tests that were antigen detection tests	48.26%	
Positive specimens by type/subtype/lineage [n (%)]		
Influenza A	6 (31.58%)	6 (31.58%)
Subtyping performed	0 (0%)	0 (0%)
A (H1N1)	0 (0%)	0 (0%)
A (H3N2)	0 (0%)	0 (0%)
Subtyping not performed	6 (100.00%)	6 (100.00%)
Influenza B	13 (68.42%)	13 (68.42%)
Lineage testing performed	0 (0%)	0 (0%)
B Victoria	0 (0%)	0 (0%)
B Yamagata	0 (0%)	0 (0%)
Lineage testing not performed	0 (0%)	0 (0%)

[†]Laboratory data in 2015-2016 season reports may not be comparable to reports from previous seasons because of the inclusion of DSHS and LRN laboratory data for the current season.

Figure 1: Number and Percentage of Tests (Antigen, Culture, PCR) Positive for Influenza by Type, Subtype, and Lineage Reported by Texas Laboratories, 2015–2016 Season



Other Respiratory Viruses

The NREVSS system collects information on a variety of respiratory viruses in addition to influenza including parainfluenza virus, respiratory syncytial virus (RSV), rhinovirus, human metapneumovirus (HMPV), seasonal coronavirus, and respiratory adenovirus. The results for the current week are summarized below.

Table 3: Non-Influenza Respiratory Virus Testing Performed by Texas NREVSS Laboratories for the Current Week

Virus	Number of Laboratories Testing	Tests Performed	Positive Tests	Percentage of Tests Positive
Adenovirus (respiratory)	7	373	22	5.90%
HMPV	6	357	2	0.56%
Parainfluenza virus	7	359	16	4.46%
Rhinovirus	5	233	75	32.19%
RSV ^{†^}	15	160	10	6.25%
Seasonal coronavirus (does not include MERS-CoV)	2	87	1	1.15%

[†]RSV tests displayed in the table are antigen detection tests only. Some non-NREVSS reporters also contribute to the RSV data.

[^]Numbers and percentage may differ from the weekly RSV report. The weekly RSV report may be accessed at <https://www.dshs.state.tx.us/RSV/disease/rsv-Data.aspx>.

Antigenic Characterization

No antigenic characterization data for Texas specimens are available at this time. The DSHS Laboratory sends a representative sample of influenza viruses to the CDC throughout the flu season.

Antiviral Resistance

No antiviral resistance testing data for Texas specimens are available at this time.

U.S. Outpatient Influenza-like Illness Surveillance Network (ILINet)

Table 5: Texas ILINet Reporting and Patient Visit Summary for the Current Week

Week 40	
Number of providers reporting [†]	104
Number of providers reporting patient visits	103
Number (%) of providers with at least one ILI case	81 (78.64%)
Percentage of all visits due to ILI	4.61%
Texas ILINet baseline [‡] , 2015–2016	6.32%

[†]Reporting providers include both ILINet and RVSP providers.

[‡]The baseline is the mean percentage of patient visits for ILI during non-influenza weeks for the previous three seasons plus two standard deviations. A “non-influenza week” is defined as a week that accounted for less than 2% of the season’s total number of specimens that tested positive for influenza.

Table 6: Percentage of Visits for Influenza-like Illness Reported by Texas ILINet Providers (as of 10/15/2015 09:48 AM)

Week	Providers Reporting	Number of ILI Cases by Age Group (Years)					Total ILI (all ages)	Total Patients	% ILI
		0-4	5-24	25-49	50-64	65+			
201540	104	170	326	332	186	123	1137	24649	4.61%

Figure 2: Percentage of Visits Due to Influenza-like Illness Reported by Texas ILINet Participants, 2015–2016 Season

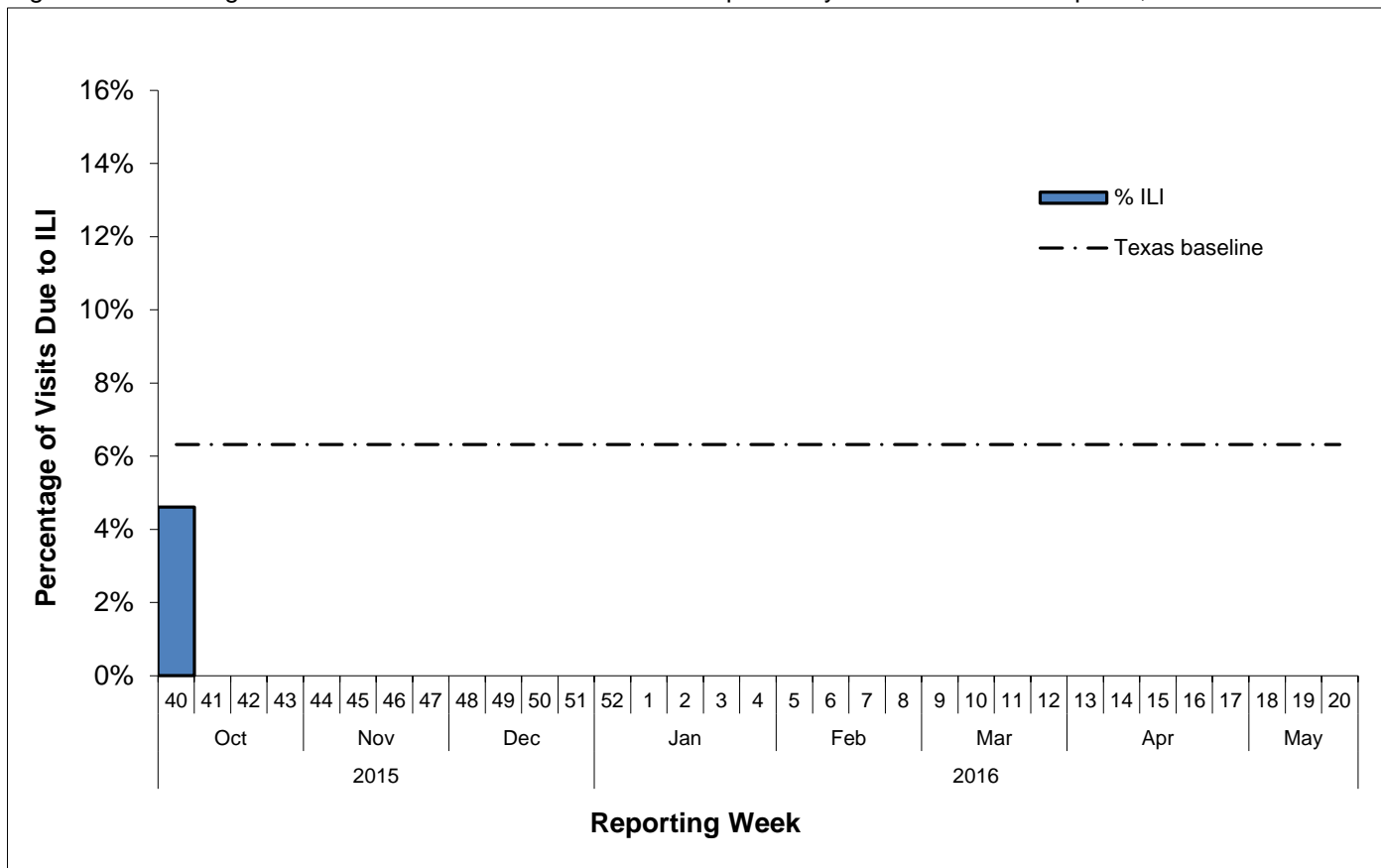
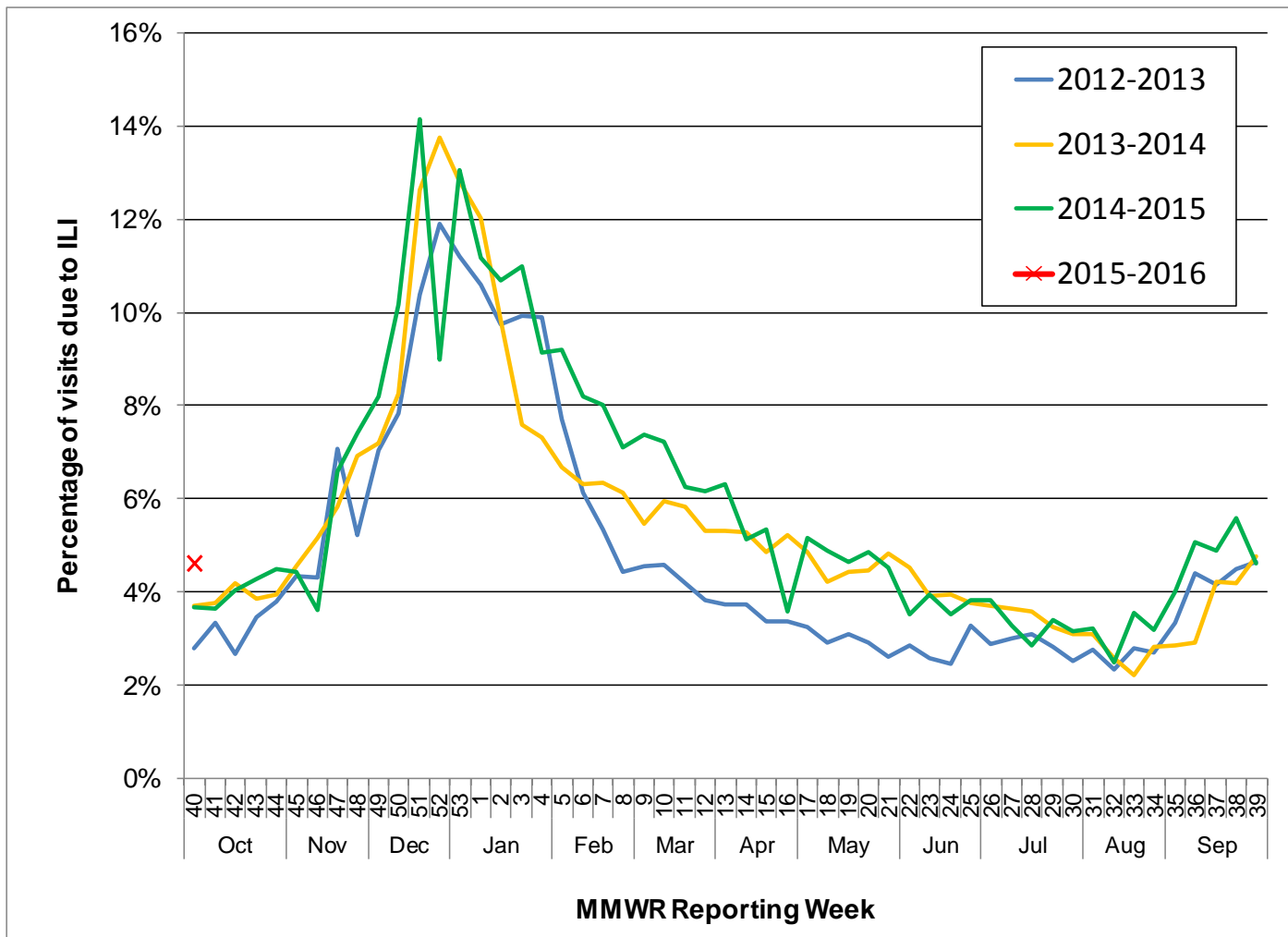


Figure 3: Percentage of Visits Due to Influenza-like Illness Reported by Texas ILINet Participants, 2012–2016 Seasons



Reports from Health Service Regions

Reports were received from all Health Service Regions (HSRs) during week 40.

Table 7: Influenza Activity Compared to Week 39 by Health Service Region (HSR)

Influenza Activity Comparison	Health Service Region (HSR)
Increased	1, 7, 8, 9/10
Same	2/3, 4/5N
Decreased	
Unsure	6/5S, 11

Variant Influenza Viruses

No variant or novel influenza viruses have been detected in Texas in 2015.

Institutional Outbreaks and School Closures

No ILI or influenza-associated outbreaks were reported during week 40.

No school closures were reported during week 40.

Influenza-Associated Pediatric Mortality

No influenza-associated pediatric deaths were reported during week 40.

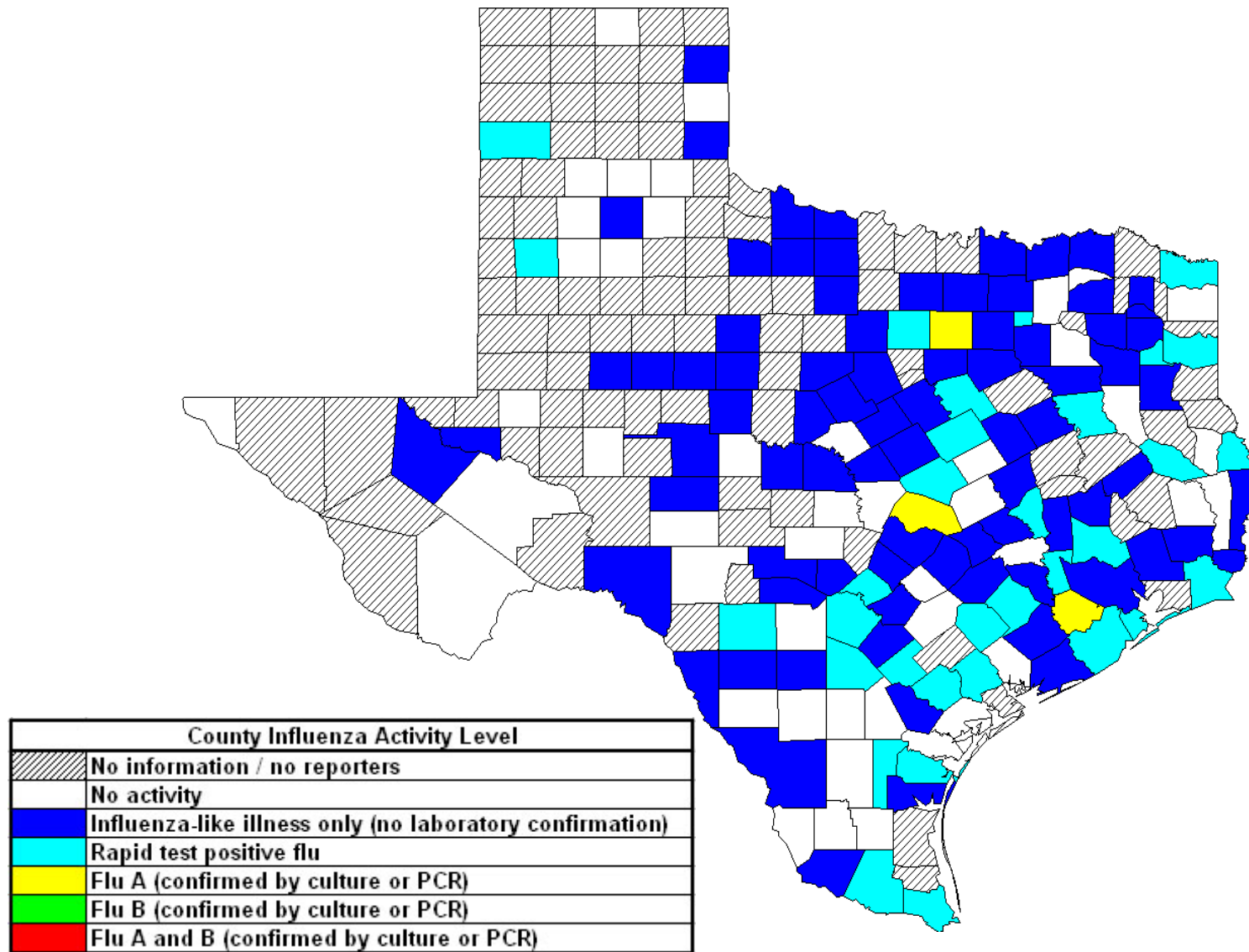
No influenza-associated pediatric deaths have been reported in Texas during the 2015-2016 influenza season. Cases of influenza-associated pediatric mortality (children <18 years of age) are reportable year-round and by law in Texas.

Table 10: Influenza-Associated Pediatric Deaths Reported in Texas During the 2015–2016 Season

Month of Pediatric Death	Influenza A (H1N1)	Influenza A (H3N2)	Influenza A (Not Subtyped)	Influenza B	Influenza, Not Typed / Not Differentiated	Influenza virus co-infection: A (not subtyped) and B	Total, All Influenza Types / Subtypes
2015							
October	0	0	0	0	0	0	0
Total	0	0	0	0	0	0	0

Statewide Influenza Activity Map

Figure 4: Texas Map Displaying the Highest Level of Influenza or ILI Activity Reported by County for the Week Ending Oct. 10, 2015 (MMWR Week 40)



Please note: The majority of influenza cases are not reportable by law in Texas. This map contains data from sentinel sites and only displays influenza and ILI cases that were reported to public health. Positive laboratory results are reported according to specimen collection date, or date received in the laboratory if the former is unknown.

Texas Influenza Surveillance Components and Measures

Activity codes (see <http://www.cdc.gov/flu/weekly/overview.htm>)

Statewide influenza activity level

A code reported weekly by states and territories to CDC indicating the geographic spread of influenza in the state. Levels are no activity, sporadic, local, regional, and widespread.

ILINet Activity Indicator

A statewide level of influenza-like illness intensity (on a scale of 1-10, with 1 being the lowest level) assigned to each state weekly by CDC based on data reported through ILINet.

Morbidity

Novel/variant influenza

Thorough investigations are performed on all cases of novel/variant influenza. *This condition is reportable by law in Texas.*

Texas ILINet

Providers voluntarily report weekly to CDC's ILINet system on the number of outpatient visits for ILI and total outpatient visits. Providers may submit up to 5 specimens per month for influenza testing. **See <http://www.dshs.state.tx.us/idcu/disease/influenza/surveillance/ILINet/> for information on how to become an ILINet provider.**

Respiratory Virus Surveillance Project (RVSP)

Providers report weekly to ILINet and submit specimens on the first 10 patients seen with ILI each week. Specimens are tested for a variety of respiratory viruses.

ILI activity

Non-ILINet providers report ILI or influenza data weekly to local or regional health departments.

Outbreaks

Healthcare, schools, and childcare facilities report ILI and influenza outbreaks to health departments in Texas. *This condition is reportable by law in Texas.*

Mortality

Influenza-associated pediatric deaths

Deaths that are associated with influenza in children < 18 years of age are reported to health departments in Texas. *This condition is reportable by law in Texas.* <http://www.dshs.state.tx.us/idcu/disease/IAPM/>

Laboratory

DSHS Austin laboratory

Providers voluntarily submit specimens to the DSHS Austin laboratory for influenza PCR testing throughout the season. Providers sign up for this program through their local health departments.

Laboratory Response Network (LRN) laboratories

Providers voluntarily submit specimens to one of the 9 Texas LRNs for influenza PCR testing throughout the season. Providers sign up for this program through their local health departments.

NREVSS

Laboratories voluntarily report influenza and other respiratory virus data weekly through the CDC's online NREVSS reporting system. **Laboratories sign up for this program by contacting DSHS.** <http://www.cdc.gov/surveillance/nrevss/>

Recommended Resources

Texas Department of State Health Services

DSHS influenza page: <http://www.texasflu.org/>

Influenza surveillance data and reports: <http://www.dshs.state.tx.us/idcu/disease/influenza/surveillance/>

Map of Texas Health Service Regions: <http://www.dshs.state.tx.us/regions/state.shtm>

Centers for Disease Control and Prevention

National FluView weekly flu report: <http://www.cdc.gov/flu/weekly/>

Variant and novel influenza viruses: <http://www.cdc.gov/flu/avianflu/index.htm>; <http://www.cdc.gov/flu/swineflu/index.htm>

Infection Control in Healthcare Facilities: <http://www.cdc.gov/flu/professionals/infectioncontrol/>

Seasonal Flu Information for Schools and Childcare Providers: <http://www.cdc.gov/flu/school/index.htm>

World Health Organization

Influenza page: <http://www.who.int/topics/influenza/en/>

Disease Outbreak News: <http://www.who.int/csr/don/en/>