



# Pre-Quiz

---

Case management initial comprehensive assessments must be done during the agency intake process.

A. True

B. False



**TEXAS**  
Health and Human Services

Texas Department of State  
Health Services

# Initial Comprehensive Assessment: What Is It?

---

Definition: A broad assessment of a client's current needs and life situation. At a minimum, it must include the following:

- Client health history, health status and health-related needs
- Client strengths and resources
- Other agencies that serve client and household
- Progress note of assessment session(s)
- Supervisor signature and date (for MCM staff during their probationary period)

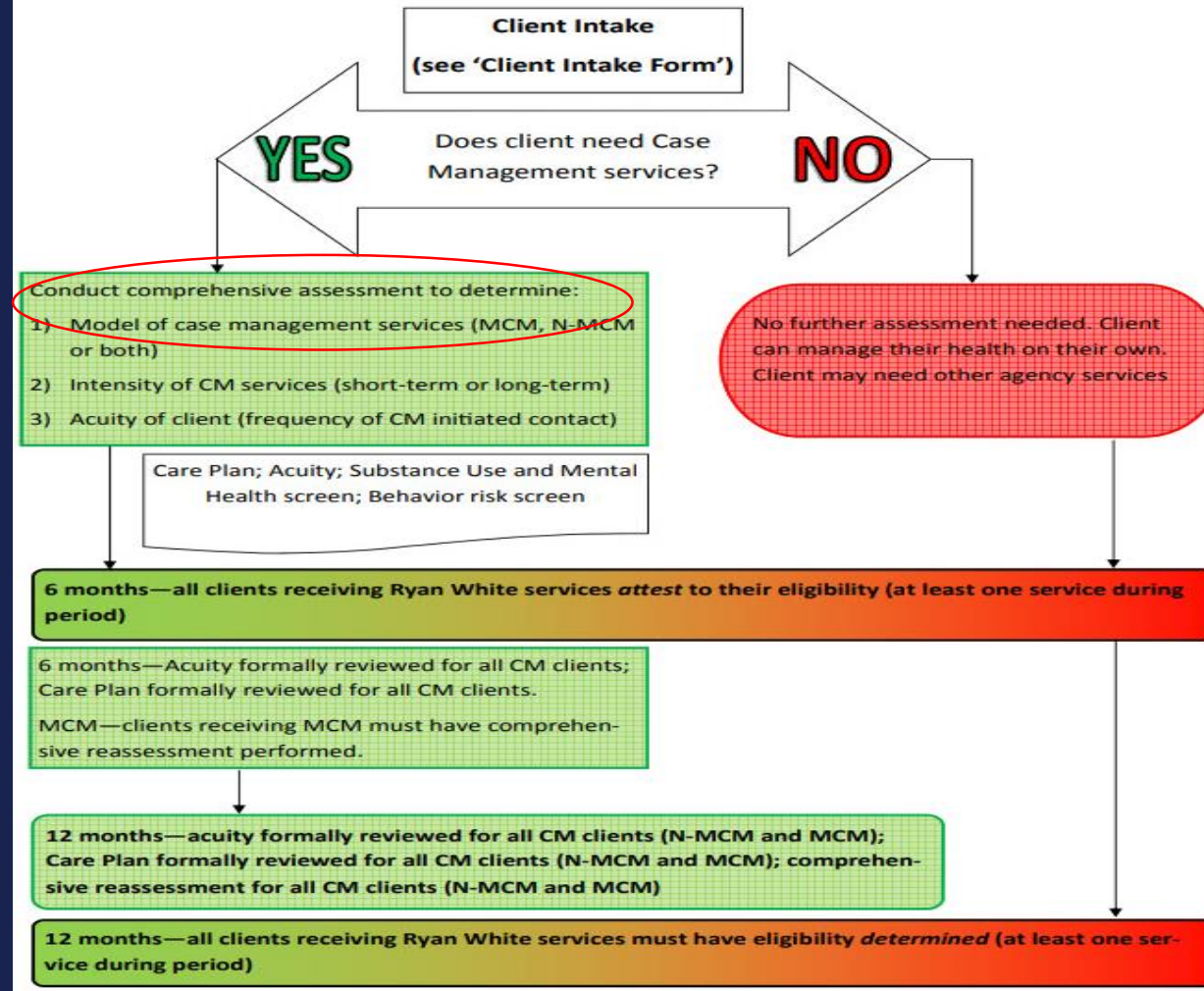


**TEXAS**  
Health and Human Services

Texas Department of State  
Health Services

# Initial Comprehensive Assessment: When Does It Happen?

## New Client Process



TEXAS  
Health and Human Services

Texas Department of State  
Health Services

# Assessment vs Intake

## How Do They Differ?

Intake	Assessment
<b>*Necessary to determine if a client needs case management*</b>	<b>*Determine model of case management and acuity of client*</b>
<b>Must happen before client can receive service of any kind at an agency</b>	<b>Must be completed within 30 calendar days of the first appointment to access CM services</b>
<b>Brief</b>	<b>Extensive</b>
<b>*MUST include RW eligibility*</b>	<b>Does not need to include RW eligibility</b>
<b>Varies by agency</b>	<b>Same for all clients</b>



TEXAS

Health and Human Services

Texas Department of State  
Health Services

# Determining CM Model: MCM Or NMCM?

## Determining Central Needs: 1 Priority

Central Need	Correct CM Model
Oral Healthcare	MCM
Nutrition/Food Bank	NMCM
Complementary HIV therapy	MCM
Legal Needs	NMCM
Family Violence	NMCM
Medication Allergies	MCM
Transportation	NMCM
<i>Coordination</i> of HIV Clinical Care	MCM
Referrals for Accessing Services	NMCM
Help With Applications	NMCM

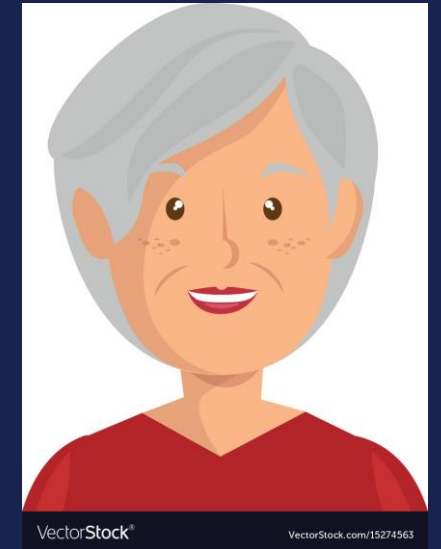


**TEXAS**  
Health and Human Services  
Texas Department of State  
Health Services

# Determining CM Model: MCM Or NMCM?

## Determining Central Needs: 2 Priorities

Central Needs	Correct CM Model
Oral Healthcare	<b>NMCM</b>
Nutrition/Food Bank	
Complementary HIV therapy	
Legal Needs	
Family Violence	
Medication Allergies	
Transportation	
Coordination of HIV Clinical Care	
Referrals for Accessing Services	
Help With Applications	



**TEXAS**  
Health and Human Services  
Texas Department of State  
Health Services

# Determining CM Model: MCM Or NMCM?

## Determining Central Needs: 3 Priorities

Central Needs	Correct CM Model
Oral Healthcare	??
<i>Nutrition/Food Bank</i>	
Complementary HIV therapy	
<i>Legal Needs</i>	
Family Violence	
Medication Allergies	
Transportation	
<i>Coordination of HIV Clinical Care</i>	
Referrals for Accessing Services	
Help With Applications	



**TEXAS**  
Health and Human Services  
Texas Department of State  
Health Services

# Performance Measures

---

- Completed assessment within 30 days of first appointment to access MCM services
- Clients must receive at least one face-to-face meeting with MCM staff that conducted initial assessment
- Clients that are non-responsive in first 30 days must move to case closure
- Basic HIV education must be provided and documented, as needed (newly diagnosed, return to care)
- Clients must have sexual health literacy and education provided by MCM, as needed



TEXAS  
Health and Human Services

Texas Department of State  
Health Services

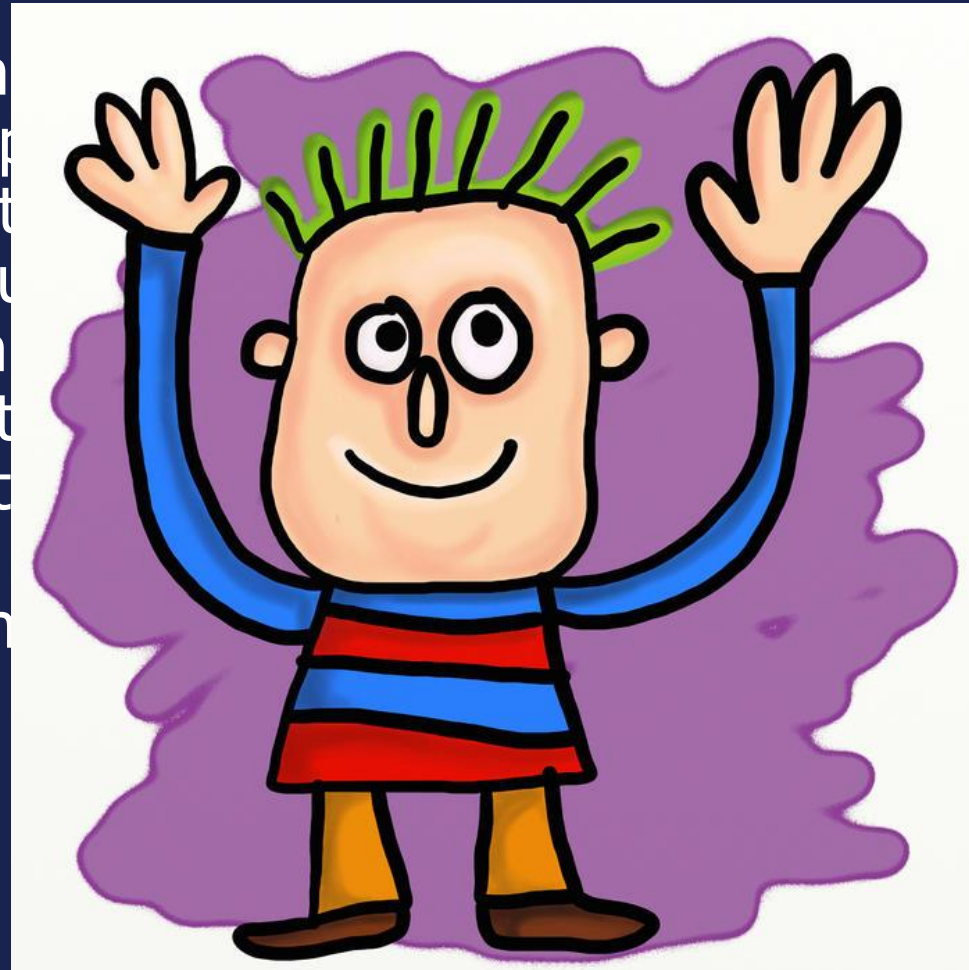




# Critical Thinking Scenarios

## What would you do?

- You determine the process to provide assistance through you. Not all items are assessed to be able to be used elsewhere. The assessment



Emergency intake continued make it possible, but comprehensive is not going from now, so necessary for

